

Paper size: A4 (210 x 297 mm or 8.27" x 11.69")
Orientation: Portrait, Printing: Laser Printing on both sides of the paper
 All papers are to be limited to a maximum of 6 pages including figures, tables and references
Margins: Leftside : 32 mm (1.25") Outside : 25.4 mm (1")
 Bottom : 25.4 mm (1") Right : 25.4 mm (1")
Font: Arial except address of the author (Arial Narrow), Line Spacing: Single

Two blank lines with font size 12 from the top margin

Instruction for Preparation and Submission of Paper

Technical Paper Presentation on Recent Advances in Manufacturing

Arial 14 Bold

Arial 11 Bold

K. Patel¹, .S.A.Naik²

1 blank line with font size 14

Arial Narrow 10

¹Associate Professor
 Department of Mechanical Engineering
 GDEC, Navsari 395007
 E-mail: sqwerty@gdec.in

²Professor
 Department of Mechanical Engineering
 GDEC, Navsari 395007
 E-mail: asd@gdec.in

1 blank line with font size 10

1 blank line with font size 10

Abstract: The format of this paper and the instructions shown give the guidelines to prepare the paper to be included in the 6th National Conference on Recent Advances in Manufacturing RAM- 2016 to be held at Department of Computer Engineering, GDEC, Navsari, India. Papers should be in accordance with the style and format given in these instructions. Abstract should not exceed **150 words**.

Arial 9 Paragraph Indenting Left: 0.5" Right : 0.5"

Keywords: Instructions, RAM-2016, Manufacturing Engineering, Technology.

1 blank line with font size 10

2 blank lines with font size 10

Heading:
 Arial 10, caps, bold
 Sub-heading
 Arial 10, bold
 Title Case
 Text:
 Arial 10

1.0 INTRODUCTION

1.1. General Information

The proceedings of the conference are to be printed by the first week of May 2016 and the proceedings will be given to the registered participants on the first day of the Conference along with the conference kit. Manuscripts previously submitted or accepted elsewhere for publication must not be submitted.

A declaration form/certificate on the following lines is to be submitted by the main author together with the manuscripts.

"I / We declare that the Paper titled -----
 -----authored by -----
 to submit in RAM-2016 conference is my/our original contribution. I / We have not submitted and will not submit the said paper for any other publication".

2.0 SUBMISSION OF TECHNICAL PAPERS

Papers are invited from prospective authors in any of the above topics. Papers should address new and significant advances in research and development in Recent Advances in Manufacturing associated with the topic as well as the current and emerging needs of industry. All papers are to be limited to a maximum of 6 pages including figures, tables and references. Full papers, as per the format, are to be submitted electronically using Microsoft Word (MS-Word) document on or before 5th April, 2016. Acceptance of papers for presentation as well as inclusion in the proceedings will be intimated after peer review, on or before 22nd April, 2016. In case of any revision, the final revised paper should reach before 1st May, 2016. Soft copy of the paper and scanned copy (duly signed) of declaration form/Certificate should be sent by email as a MS Word file attachment to techevent@gdec.in.

3.0 EQUATIONS AND SYMBOLS

When numbering the equations, enclose the numbers in round brackets and place them on the right-hand margin of the column. Ra = (R1 + R2 +Rn).....(1)

4.0 ILLUSTRATIONS

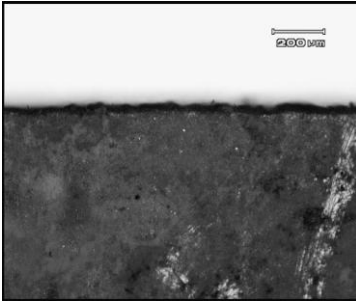


Fig. 1 Microscopic view of the cutting edge

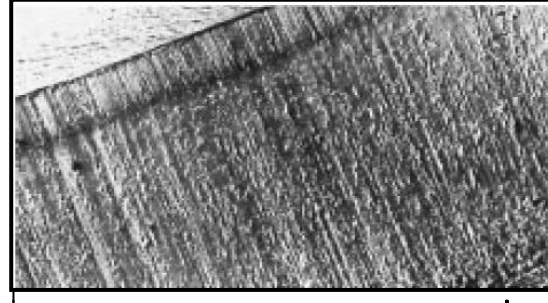


Fig. 2 D2 Punch worn by abrasive wear

4.1. Figures and photographs

Line drawings and black and white photographs must be placed as close to their first reference in the text as possible. All line drawings are to be directly brought into the text or scanned into the text.

4.2 Tables

Table 1 Table format

| Sr. No. | Machining Parameter | Level 1 | Level 2 | Level 3 | Level 4 |
|---------|---------------------|---------|---------|---------|---------|
| 1. | A | 1 | 2 | 3 | 4 |
| 2. | B | 1 | 2 | 3 | 4 |
| 3. | C | 1 | 2 | 3 | 4 |
| 4. | D | 1 | 2 | 3 | 4 |

5.0 REFERENCES

All citations in the text should contain the author name followed by year of publication. For example Single author papers can be cited in the text as (Bachmann, 1990) or "Bachmann (1990) suggests.....". Similarly papers with two and more authors are cited as (Chen and Darling, 2005.) and (Riccardi et al., 1988.) respectively.

In the references list, references should be arranged first alphabetically and then further sorted chronologically if necessary. More than one reference from the same Author(s) in the same year must be identified by the letters "a", "b", "c", etc., placed after the year of publication.

1. Yeng P C, and Cheng R B, 2007, "The xxxxx costs on yxy xxx yyyy zzzzz", Journal of Business Xyzabc, 16, pp. 180-189.
2. Bachmann R S, 1990, "Industrial laser applications", Appl Surf Sci, 46, pp.254-263.
3. Riccardi Y, Cantello V, Mariotti N, Giacosa R, 1998, "Micromachining with excimer laser", CIRP Ann 47/1:145-148.

Arial Narrow 10
Indent at 0.25"